

Your One Stop Parts Headquarters!

Quality Parts • Friendly, Knowledgeable Staff

Ph. 602-275-7990 • www.so-cal-az.com • Toll Free 800-732-0076

FORD CAR LOCKING DECK LID HANDLE

This chrome locking handle is used on the rumble or deck lid of the early Fords. Includes 2 keys.

32-34 DECK HANDLE	VIN-40-702352	40.00 EA
28-34 MOUNT PAD	VIN-A-702356-E	3.00 EA

SEATS

FORD CAR COUPE & ROADSTER SEAT FRAMES

These are built with a steel frame and non-sag seat spring for a comfortable ride in your early hot rod. Many more styles and options are available, please call for more info. Prices are "starting at" prices.

28-34 WITH ADJUSTABLE BACK	PLEASE CALL
28-32 WITH FIXED BACK	PLEASE CALL
31-34 BUCKET ROADSTER SEATS	PLEASE CALL
35-49 SQUARE SPLIT BACK	PLEASE CALL
55-57 SPLIT BACK SEAT	PLEASE CALL
28-47 FORD PICK-UP SEAT	PLEASE CALL



FORD CAR SEAT FOAM KITS

These foam kits are for the above Glide seats. Many are available, please call for more info. Prices are "starting at" prices.

28-34 CONTOURED FOAM	PLEASE CALL
31-34 BUCKET CONTOURED FOAM	PLEASE CALL
28-66 PICK-UP CONTOURED FOAM	PLEASE CALL

SO-CAL/GLIDE ENGINEERING SEAT

This is it! Glide and So-Cal have put their heads together and created a seat that does it all. The bottom cushion lifts up for storage underneath, the back reclines forward and back for comfort and storage, the seat slides forward and back 7" for tall or short hot rodders, and the top back edge of the seat fits under the rear panel so you can push the seat back, slide down in your seat, and hold on.

ADJUSTABLE SEAT	SOC-006-60500	650.00 EA
ADJ SEAT W/WARM REST	SOC-006-65000-CA	755.00 EA
SEAT FOAM	GLI-F-213	179.99 EA

SEAT BELTS & HARDWARE



SEAT BELTS (NON-RETRACTABLE)

New seat belts for your hot rod car or truck. These lap belts come in two styles: one with a GM type push button release, the other with a chrome lift-up release. These are 74 inches long and have mounting tabs on each belt. If you don't see the color you need feel free to call for more options.

GM BLACK	AMS-74-02	19.99 EA
GM SILVER	AMS-74-12	19.99 EA
GM ANTELOPE (TAN)	AMS-74-21	19.99 EA
CHROME BLACK	AMS-74LL-02	34.99 EA
CHROME SILVER	AMS-74LL-12	34.99 EA

Continued...

CHROME ANTELOPE	AMS-74LL-21	34.99 EA
CHROME BRIGHT RED	AMS-74LL-20	34.99 EA
CHROME DARK BLUE	AMS-74LL-01	34.99 EA
CHROME BURGUNDY	AMS-74LL-04	34.99 EA

SEAT BELTS TWO POINT RETRACTABLE

GM Style with push button release. Outside belt has built in retractor.

Available in same colors as listed above, state color when ordering.

GM TWO POINT BELT	AMS-S-209-0	29.99 EA
-------------------	-------------	----------



SEAT BELTS THREE POINT RETRACTABLE

This is the shoulder belt style. They have a retractor on the outside lower mount, a triangle mount over the shoulder, and a GM style buckle on the inside belt. The hard buckle sets have a stiff plastic cover over them to keep the belt where you want it.

BLACK HARD BUCKLE	AMS-I-3206-02	56.99 EA
BLACK SOFT BUCKLE	AMS-WELR-RRR-02	55.99 EA
SILVER HARD BUCKLE	AMS-I-3206-07	56.99 EA
SILVER SOFT BUCKLE	AMS-WELR-RRR-07	55.99 EA
ANTELOPE HARD BUCKLE	AMS-I-3206-03	56.99 EA
ANTELOPE SOFT BUCKLE	AMS-WELR-RRR-03	55.99 EA

SEAT BELT ANCHOR PLATES AND HARDWARE

Used for mounting belts in cars that never had them before. Kits include, 2 plates, 2 bolts, and four nuts. One kit does one seat belt pair.

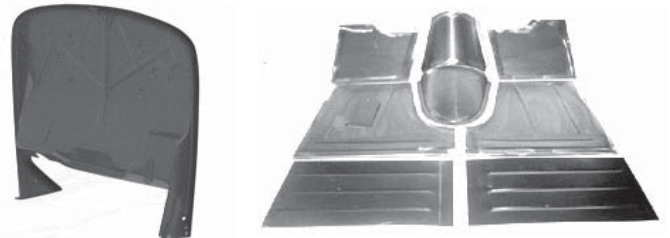
FLAT ANCHOR PLATES	HOF-SBHP	16.99 KIT
ANGLED BELT MOUNTS	HOF-SBHPA	16.99 KIT

AFTERMARKET FIREWALLS & FLOORS

1932 FORD STEEL FIREWALL

New steel firewall designed to look and fit like the original 1932

32 STEEL FIREWALL	WYS-WP2000	799.99 EA
-------------------	------------	-----------



32 FORD FLAT FIREWALL

New stamped steel flat firewall by Brookville Roadster with the stock look. This is for use with Brookville's aluminum mounting feet.

32 FIREWALL	ANT-B-1015	449.99 EA
-------------	------------	-----------

AFTERMARKET FIREWALLS & FLOORS

New steel firewalls and floor boards are built to fit just like the original and give you a clean new start. We offer some as a stock replacement, or some have a 2 to 5 inch recess for more engine clearance. Give us a call and we'll help you find one for your ride.

FORD TRUCK	PLEASE CALL
FORD CAR	PLEASE CALL
CHEVY TRUCK	PLEASE CALL
CHEVY CAR	PLEASE CALL



SO-CAL Speed Shop Arizona Vintage Ford & Chevrolet Parts

EARLY FORD PATCH PANELS

FORD CAR COWL PATCH PANELS

The 28-29 cowl patches extend from the bottom of the gas tank to the bottom of the car. The 30-31s cover just the lower 6 inches of the cowl.

28-29	ANT-A-114-A	PLEASE CALL
30-31	CAR-AM-725	49.99 EA



FORD CAR QUARTER PATCH PANELS

These patches are for the section just behind the door in front of the rear wheel wells.

28-29 COUPE	CAR-AM-710	49.99 PR
30-31 COUPE	CAR-AM-701	49.99 PR

32 ROADSTER PATCH PANELS

Steel patch panels for the 32 Ford roadsters. All approx 6" tall.

COWL PATCH	ANT-B-114	PLEASE CALL
1/4 PATCH	ANT-B-150	PLEASE CALL
WHEEL WELLS	ANT-B-181	PLEASE CALL
BELOW DECK LID	ANT-B-163	PLEASE CALL

33-34 STEEL REPAIR PANELS

New steel replacement panels for your 1933-34 Ford. Please call for pricing and availability.

TUDOR/3WC ROCKER	RJE-RP-34-T	PLEASE CALL
5 WINDOW COUPE	RJE-RP-34-5	PLEASE CALL
BELOW DECK LID	RJE-BD-34	PLEASE CALL
TUDOR/3WC QUARTER	RJE-QP-34-T	PLEASE CALL
5WC QUARTER PATCH	RJE-QP-34-5	PLEASE CALL
COWL PATCH PANEL	RJE-CP-34	PLEASE CALL
TUDOR/3WC LOWER DOOR	RJE-0DB34-3R	PLEASE CALL

FORD CAR 37-40 QUARTER PATCH PANELS

Got rust? These new steel quarters will help you fix that.

37-40 QUARTER PATCH	MAC-78-35267	PLEASE CALL
---------------------	--------------	-------------

PATCH PANELS, FENDER

FORD TRUCK FRONT FENDER LOWER REAR PANEL

Patch panel in the lower rear corner of the front fender.

48-52 RH	DEN-7C-16009	PLEASE CALL
48-52 LH	DEN-7C-16010	PLEASE CALL
57-60 RH	DEN-B7C-16007	PLEASE CALL
57-60 LH	DEN-B7C-16008	PLEASE CALL
61-66 RH	DEN-C1TZ-16007	PLEASE CALL
61-66 LH	DEN-C1TZ-16008	PLEASE CALL



CHEVY TRUCK FRONT FENDER PATCH

Lower rear of front fender patch panel.

47-55 LH	COU-47-16005-L	119.99 EA
47-55 RH	COU-47-16005-R	119.99 EA

PATCH PANELS, COWL

FORD TRUCK FULL COWL SIDE PANEL

Complete outer skin of the side cowl panel.

53-56 RH	OVA-53F-707001-R	49.99 EA
53-56 LH	OVA-53F-707001-L	49.99 EA

FORD TRUCK LOWER 1/2 COWL SIDE

Lower 1/2 of the cowl side panel.

53-56 RH	OVA-53F-707001-R2	49.99 EA
53-56 LH	OVA-53F-707001-L2	49.99 EA



CHEVY TRUCK OUTER COWL PATCH PANEL

Steel full-size patch panel for the exterior cowl area. Available in full length or as a lower patch 21 inches tall.

47-55 LH FULL LENGTH	COU-47-16700-L	75.99 EA
47-55 RH FULL LENGTH	COU-47-16700-R	75.99 EA
47-55 LH LOWER	COU-47-16700-L2	56.99 EA
47-55 RH LOWER	COU-47-16700-R2	56.99 EA

CHEVY TRUCK INNER TO OUTER COWL PATCH PANEL

Piece that fills the area between the inner and outer cowl panels.

47-55 LH	COU-47-16770-L	56.99 EA
47-55 RH	COU-47-16770-R	56.99 EA

CHEVY TRUCK INNER COWL KICK PLATE

Steel repair panel for area in front of the door opening.

47-50 LH	COU-47-16750-L	35.99 EA
47-50 RH	COU-47-16750-R	35.99 EA
51-55 LH	COU-51-16750-L	35.99 EA
55-59 LH	COU-55-46050-L	25.99 EA
55-59 RH	COU-55-46050-R	25.99 EA

CHEVY TRUCK FIREWALL/TOE PANEL

This is the firewall of the truck and the angled toe panel that attaches to the floor. Shipped by truck.

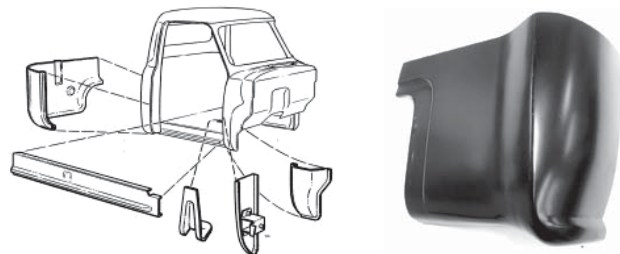
67-68	COU-67-46065	179.99 EA
69-72	COU-69-46065	179.99 EA

PATCH PANELS, CAB CORNERS

FORD TRUCK FRONT CAB CORNER PATCH PANELS

Steel patch panel for the lower front corners of the cab.

48-52 RH	DEN-7C-8102054	89.99 EA
48-52 LH	DEN-7C-8102055	89.99 EA
48-52 PR	DEN-7C-8102055-PR	169.99 PR
53-56 RH	DEN-53F-707001-R	49.99 EA
53-56 LH	DEN-53F-707001-L	49.99 EA



Your One Stop Parts Headquarters!

Quality Parts • Friendly, Knowledgeable Staff

Ph. 602-275-7990 • www.so-cal-az.com • Toll Free 800-732-0076

FORD TRUCK REAR CAB CORNER PATCH PANELS

Steel patch panel for the lower rear corners of the cab.

48-52 RH	DEN-7C-8140302	39.99 EA
48-52 LH	DEN-7C-8140303	39.99 EA
53-56 RH	OVA-53F-707000-R	39.99 EA
53-56 LH	OVA-53F-707000-L	39.99 EA
57-60 RH	DEN-B7C-8140302-S	69.99 EA
57-60 LH	DEN-B7C-8140303-S	69.99 EA
61-66 RH	DEN-C1TZ-8140302-S	69.99 EA
61-66 LH	DEN-C1TZ-8140303-S	69.99 EA
67-72 RH	OVA-C7TZ-8140303-R	19.99 EA
67-72 LH	OVA-C7TZ-8140303-L	19.99 EA
73-79 RH	OVA-D3TZ-8140303-R	19.99 EA
73-79 LH	OVA-D3TZ-8140303-L	19.99 EA

FORD TRUCK INNER REAR CAB CORNER PATCH PANELS

Steel patch panels for the interior rear corners of the cab.

53-56 RH	OVA-53F-707500-R	59.99 EA
53-56 LH	OVA-53F-707500-L	59.99 EA

CHEVY TRUCK REAR CAB CORNERS

Reproduction cab corners for repairing your rusted or damaged ones.

47-55 1ST LH	COU-47-707000-L	35.99 EA
47-55 1ST RH	COU-47-707000-R	35.99 EA
55-59 LH	COU-55-707000-L	45.99 EA
55-59 RH	COU-55-707000-R	45.99 EA
60-66 LH	COU-60-707000-L	17.99 EA
60-66 RH	COU-60-707000-R	17.99 EA
67-72 LH	COU-67-707000-L	20.00 EA
67-72 RH	COU-67-707000-R	20.00 EA

CHEVY TRUCK INNER CAB CORNERS

Steel patch panel for the rear inner cab corner.

47-55 LH	COU-47-707500-L	34.99 EA
47-55 RH	COU-47-707500-R	34.99 EA
55-59 LH	COU-55-707500-L	36.99 EA
55-59 RH	COU-55-707500-R	36.99 EA

CHEVY TRUCK REAR CAB PILLAR PATCH

These fit behind the door opening, down at the bottom of the cab.

55-59 LH	COU-55-6000-L	34.99 EA
55-59 RH	COU-55-6000-R	34.99 EA

CHEVY TRUCK CAB FLOOR SUPPORT BRACE

Bracing under the cab that helps support the floor.

47-55 LH	COU-47-5002-L	34.99 EA
47-55 RH	COU-47-5002-R	34.99 EA
55-59 LH	COU-55-5002-L	49.99 EA
55-59 RH	COU-55-5002-R	49.99 EA
60-66 LH	COU-60-706008-L	56.99 EA
60-66 RH	COU-60-706008-R	56.99 EA
67-72 LH	COU-67-5004-L	74.99 EA
67-72 RH	COU-67-5004-R	74.99 EA
67-72 REAR	COU-67-5003	149.99 EA

PATCH PANELS, ROCKERS

FORD TRUCK ROCKER PANELS

Steel patch under the door.

48-52 PR	DEN-8C-8110110-PR	PLEASE CALL
53-56 RH	OVA-53F-706000-R	29.99 PR
53-56 LH	OVA-53F-706000-L	29.99 PR
57-60 RH	DEN-B7C-8110110	PLEASE CALL
57-60 LH	DEN-B7C-8110111	PLEASE CALL
61-64 RH	DEN-C1TZ-8110110	PLEASE CALL

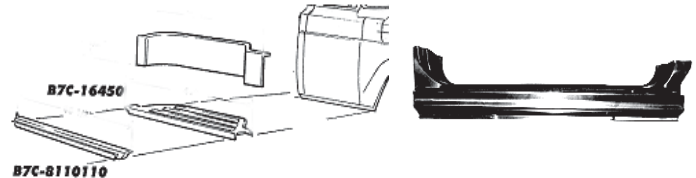
Continued...

61-64 LH	DEN-C1TZ-8110111	PLEASE CALL
65-66 RH	DEN-C5TZ-8110110	PLEASE CALL
65-66 LH	DEN-C5TZ-8110111	PLEASE CALL
67-72 PAIR	DEN-C7TZ-8110110-PR	PLEASE CALL

FORD TRUCK CAB/RUNNING BOARD SKIRT CHANNEL

Steel channel under the cab that the running board seals fasten to.

53-55	DEN-BAAA-8110112-PR	19.99 PR
-------	---------------------	----------



CHEVY TRUCK REPLACEMENT ROCKER PANELS

Replacement rockers for under the door of the pick up.

47-55 LH	COU-47-706000-L	59.99 EA
47-55 RH	COU-47-706000-R	59.99 EA
55-59 LH	COU-55-706000-L	32.99 EA
55-59 RH	COU-55-706000-R	32.99 EA
60-66 RH	COU-60-706000-R	44.99 EA
60-66 LH	COU-60-705000-L	44.99 EA
67-72 RH	COU-67-706000-R	26.00 EA
67-72 LH	COU-67-706000-L	26.00 EA

CHEVY TRUCK INNER ROCKER/OUTER FLOOR

This is the outer floor and the inner rocker panel backing in one part.

60-66 LH	COU-60-706005-L	74.99 EA
60-66 RH	COU-60-706005-R	74.99 EA
67-72 LH	COU-67-706005-LC	59.99 EA
67-72 RH	COU-67-706005-RC	59.99 EA

CHEVY TRUCK ROCKER PANEL INNER BACKING

Steel panel behind the rocker panel under the truck.

60-72 LH/RH	COU-67-706500-L/R	10.99 EA
-------------	-------------------	----------

CHEVY TRUCK DOOR SILL & ROCKER PANEL

Step and rocker panel for the door opening of the truck. Includes step and the outer rocker panel.

55-59 LH	COU-55-706010-L	59.99 EA
55-59 RH	COU-55-706010-R	59.99 EA

CHEVY TRUCK DOOR SILL STEP PLATE BRACKET

Steel brace that reinforces the step plate listed above.

55-59 LH/RH	COU-55-706020	22.99 EA
-------------	---------------	----------

PATCH PANELS, REAR WINDOW

FORD TRUCK BIG WINDOW CONVERSION

Converts any 53-56 small back window cab to a 1956 Big Window.

53-56	OVA-53F-704289-CONV	599.99 EA
-------	---------------------	-----------

PATCH PANELS, DOORS

FORD TRUCK OUTER DOOR LOWER REPAIR PANEL

Steel patch panel for the bottom outside of the door.

53-56 RH	OVA-53F-702357-R	39.99 EA
53-56 LH	OVA-53F-702357-L	39.99 EA
61-66 RH OR LH	DEN-C1TZ-8120200	PLEASE CALL

FORD TRUCK INNER DOOR BOTTOM

Steel patch at the bottom of the door.

53-56 RH	OVA-53F-702355-R	42.99 EA
53-56 LH	OVA-53F-702355-L	42.99 EA



est. 1946

SO-CAL Speed Shop Arizona Vintage Ford & Chevrolet Parts

FORD TRUCK DOOR PILLAR REPLACEMENT

Sixteen inch tall replacement door jamb. Lower hinge bucket installed.

53-56 RH	DEN-BAAA-8102042	49.99 EA
53-56 LH	DEN-BAAA-8102043	49.99 EA

FORD TRUCK LOWER DOOR SEAL RETAINER

Steel retainer at the bottom of the door to help hold the door seal.

48-52	DEN-7C-8120712-PR	9.99 PR
53-56	DEN-BAAA-8120712-PR	7.99 PR



CHEVY TRUCK LOWER DOOR PATCH PANELS

Steel patches for the lower section of the door.

47-55 LH OUTER	COU-47-702355-L	32.99 EA
47-55 RH OUTER	COU-47-702355-R	32.99 EA
47-55 LH INNER	COU-47-702354-L	39.99 EA
47-55 RH INNER	COU-47-702354-R	39.99 EA
55-59 LH OUTER	COU-55-702355-L	45.99 EA
55-59 RH OUTER	COU-55-702355-R	45.99 EA
55-59 LH INNER	COU-55-702354-L	79.99 EA
55-59 RH INNER	COU-55-702354-R	79.99 EA
60-66 RH OR LH OUTER	COU-60-702355-L/R	29.99 EA
60-63 LH INNER	COU-60-702354-L	66.99 EA
60-63 RH INNER	COU-60-702354-R	66.99 EA
64-66 LH INNER	COU-64-702354-L	52.99 EA
64-66 RH INNER	COU-64-702354-R	52.99 EA
67-72 LH INNER	COU-67-702354-L	29.99 EA
67-72 RH INNER	COU-67-702354-R	29.99 EA

LOWER FRONT DOOR PILLAR PATCH

This fits in front of the door on the lower portion of the cab.

60-66 LH	COU-60-6006-L	42.99 EA
60-66 RH	COU-60-6006-R	42.99 EA
67-72 LH	COU-67-702365-L	12.50 EA
67-72 RH	COU-67-702365-R	12.50 EA

CHEVY TRUCK LOWER DOOR HINGE REPAIR PANEL

Steel patch for the lower hinge area on the door.

55-59 LH	COU-55-46331-L	45.00 EA
55-59 RH	COU-55-46331-R	45.00 EA

CHEVY TRUCK LOWER DOOR HINGE POCKET

Steel lower inner/outer hinge pocket. This is the structure on the cab that the door hinge mounts into.

55-59 LH OUTER	COU-55-46000-L	38.99 EA
55-59 RH OUTER	COU-55-46000-R	38.99 EA
55-59 LH INNER	COU-55-46010-L	38.99 EA
55-59 RH INNER	COU-55-46010-R	38.99 EA

DOOR HINGE ACCESS PANEL

New lower door hinge access panel.

55-59	COU-55-702368	25.99 PR
-------	---------------	----------

PATCH PANELS, CAB MOUNTING

FORD TRUCK FRONT BODY MOUNTS

Steel reinforcement panel in the cowl section to add support to the body mount.

53-56 RH	DEN-BAAA-8102056	29.99 EA
53-56 LH	DEN-BAAA-8102057	29.99 EA

CHEVY TRUCK FRONT CAB MOUNT SUPPORT

This is the piece under the cab at the front that sits on the frame.

47-55 LH	COU-47-5002-L	32.99 EA
47-55 RH	COU-47-5002-R	32.99 EA
55-59 LH	COU-55-5002-L	49.99 EA
55-59 RH	COU-55-5002-R	49.99 EA
60-66 LH OR RH	COU-60-5002	19.99 EA
67-72 LH OR RH	COU-67-5002	15.99 EA

CHEVY TRUCK REAR CAB MOUNT SUPPORT

This is the piece under the cab at the back that sits on the frame.

47-55 LH	COU-47-5003-L	34.99 EA
47-55-RH	COU-47-5003-R	34.99 EA

PATCH PANELS, FLOORS

FORD TRUCK FLOOR PANS

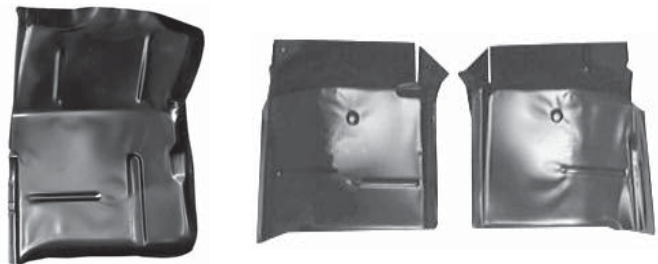
Steel replacement floor pans

48-52 RH	DEN-7C-8111106	169.99 EA
48-52 LH	DEN-7C-8111107	169.99 EA
53-56 RH	OVA-53F-5005-R	99.99 EA
53-56 LH	OVA-53F-5005-L	99.99 EA
53-56 REAR FLOOR	OVA-53F-5007-R	179.99 EA
67-72 RH	OVA-C7TZ-1011135-R	49.99 EA
67-72 LH	OVA-C7TZ-1011135-L	49.99 EA

FORD TRUCK TRANSMISSION FLOOR COVER

Steel pan that fits over the opening in the floor over the transmission.

53-56	OVA-53F-10000	49.99 EA
-------	---------------	----------



CHEVY TRUCK FLOOR PANELS

Weld in panels for repairing the floor of your truck. 47-59 floor boards also include a section of the toe kick area.

47-55 RH	COU-47-46060-R	74.99 EA
47-55 LH	COU-47-46060-L	74.99 EA
55-59 RH	COU-55-46060-R	74.99 EA
55-59 LH	COU-55-46060-L	74.99 EA
60-62 LH	COU-60-46060-LOG	69.99 EA
60-62 RH	COU-60-46060-ROG	69.99 EA
63-66 LH	COU-63-46060-LOG	69.99 EA
63-66 RH	COU-63-46060-ROG	69.99 EA
67-72 RH	COU-67-46060-L	32.99 EA
67-72 LH	COU-67-46060-R	32.99 EA

CHEVY TRUCK FIREWALL/TOE PANEL

This is the full firewall and toe panel. Shipped by Truck.

67-68	COU-67-46065	179.99 EA
69-72	COU-69-45065	179.99 EA

Your One Stop Parts Headquarters!

Quality Parts • Friendly, Knowledgeable Staff

Ph. 602-275-7990 • www.so-cal-az.com • Toll Free 800-732-0076

CHEVY TRUCK FOOT WELL PATCH PANELS

Steel patch for the foot well area in the truck.

60-66 LH	COU-60-46062-L	29.99 EA
60-66 RH	COU-60-46062-R	29.99 EA
67-72 LH	COU-67-46062-L	19.99 EA
67-72 RH	COU-67-46062-R	19.99 EA

CHEVY TRUCK TRANSMISSION FLOOR COVER

Steel plate that covers the hole in the floor above the transmission.

47-55 3 SPEED	COU-47-10000-3	69.99 EA
47-55 4 SPEED	COU-47-10000-4	69.99 EA
55-59	COU-55-10000	82.99 EA

PATCH PANELS, WHEEL WELLS

CHEVY TRUCK REAR INNER WHEEL WELLS

New steel inner wheel wells for the bed of your truck.

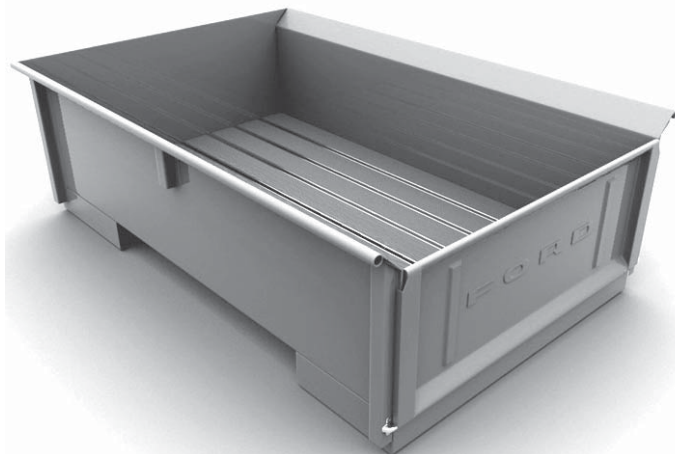
60-66 RH OR LH	COU-60-16011-L/R	99.99 EA
67-72 RH OR LH	COU-67-16011-L/R	79.99 EA

BED KITS

FORD TRUCK COMPLETE NEW TRUCK BED

This kit comes complete with all bed parts except for the rear fenders. Includes Bed sides, front panel, tailgate, wood floor, bed strips and bolts, and all hardware. Kit are available assembled or in kit form.

48-50 KIT	MAK-11127/0	PLEASE CALL
48-50 ASSEM	MAK-11167/0	PLEASE CALL
51-52 KIT	MAK-11129/0	PLEASE CALL
51-52 ASSEM	MAK-11169/0	PLEASE CALL
53-72 KIT	MAK-11131/0	PLEASE CALL
53-72 ASSEM	MAK-11171/0	PLEASE CALL



BED MOUNTING PARTS

FORD TRUCK BED TO FRAME PADS

Rubber pads that mount under the bed to the frame.

48-52	DEN-7C-8144155-S	7.99 SET
53-56	DEN-BAAA-8144155-S	7.99 SET

FORD TRUCK FRONT BED BOLTS

The two long bolts at the front of the bed that mount it to the frame.

48-63	DEN-350620-S8	3.60 EA
-------	---------------	---------

FORD TRUCK BED BOLT KIT

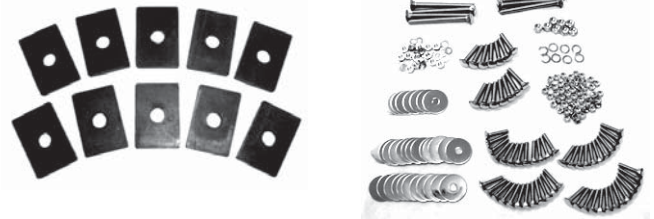
Bolts and washers that pass through the wood that mount the be to the frame. Set of 4 bolts, dished washers, and nuts.

48-72 STEPSIDE	OVA-48F-65004	21.99 SET
----------------	---------------	-----------

CHEVY TRUCK BED MOUNTING PAD SETS

Rubber that cushion the bed against the frame of the truck. 1/2 ton

47-53 SHORT	COU-47-65005-A	7.95 SET
47-53 LONG	COU-47-65005-B	10.95 SET
55-72 LONG	COU-55-65005	12.95 SET



CHEVY TRUCK BED BOLT WASHER

Cadium washer for the bolts that mount the bed to the frame.

67-72	COU-WASHER-1	1.75 EA
-------	--------------	---------

BED FLOOR PARTS

FORD TRUCK BED WOOD KIT

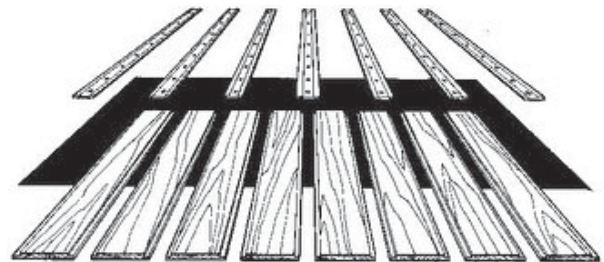
New solid oak bed wood for finishing your restoration job. Set of eight planks. STEP SIDE

50-72	EAR-1C-8312606	379.99 KIT
-------	----------------	------------

FORD TRUCK BED STRIPS 48-56 TRUCKS

Steel strips that run the length of the bed. Used to mount the wood to the floor. Set of seven strips.

PLAIN	DEN-7C-8112605-CR	99.99 SET
POLISHED SS	EAR-7C-8312605-HSS	189.99 SET



FORD TRUCK BED STRIP BOLT KITS

Complete set of bolts, nuts, and washers to attach bed strips. Plain stainless steel and polished stainless kits. Available in 49 or 65 piece bolt sets. 49 Pc set holds only the wood. 65 Pc set holds the wood and strips and also the sides, front and back of the bed.

48-56 49 PC SS	VIN-7C-8112610-SS	59.99 KIT
48-56 65 PC POLISHED	VIN-7C-8112615-SSP	89.99 KIT

FORD TRUCK BED BOARD END CAP

Stainless steel plate that mounts at the end of the bed. Used to cover the back edge of the boards.

48-72 POLISHED	EAR-7C-8312609-SS	39.99 EA
----------------	-------------------	----------

FORD TRUCK WOOD TO BED SEAL

Seal placed between the wood and the bed sides to keep the metal from scaring the wood.

48-56	DEN-7C-8144150-S	17.99 EA
-------	------------------	----------

CHEVY TRUCK ANGLE STRIPS (POLISHED STAINLESS)

Polished stainless strips that run the sides of the bed. They cover the edge of the wood along the bed side. Steel Avail, Please Call

47-53 1/2 TON	COU-47-65002-SBSS	69.99 PR
47-53 3/4 TON	COU-47-65002-LBSS	75.99 PR

Continued...



SO-CAL Speed Shop Arizona

Vintage Ford & Chevrolet Parts

54-59 1/2 TON	COU-54-65002-SBSS	69.99 PR
60-66 1/2 TON STEPSIDE	COU-60-65002-SBSS	69.99 PR
MORE YEARS AVAILABLE	CALL 800-732-0076	

CHEVY TRUCK BED STRIPS (POLISHED STAINLESS)

Polished strips that hold the wood in place. (Steel Avail. Please Call)

47-50 1/2 TON	COU-47-65001-SBSS	169.99 SET
51-53 1/2 TON	COU-51-65001-SBSS	149.99 SET
54-59 1/2 TON	COU-54-65001-SBSS	149.99 SET
58-59 FLEETSIDE	COU-58-65001-SBFSS	229.99 SET
MORE YEARS AVAILABLE	CALL 800-732-0076	

CHEVY TRUCK STEPSIDE SHORT BED BOLT KITS

Complete set of bolts, nuts, and washers for mounting the bed.

47-50 CAD	COU-47-65003-C76	39.99 KIT
47-50 SS	COU-47-65003-SS76	119.99 KIT
51-53 CAD	COU-51-65003-C76	39.99 KIT
51-53 SS	COU-51-65003-SS76	109.99 KIT
54-55 1st CAD	COU-54-65003-C77	39.99 KIT
54-55 1st SS	COU-54-65003-SS77	109.99 KIT
55-59 CAD	COU-55-65003-C77	39.99 KIT
55-59 SS	COU-55-65003-SS77	109.99 KIT
60-66 CAD	COU-60-65003-C77	39.99 KIT
60-66 SS	COU-60-65003-SS77	109.99 KIT

CHEVY TRUCK STEPSIDE LONG BED BOLT KITS

Complete set of bolts, nuts, and washers for mounting the bed.

47-50 CAD	COU-47-65003-C85	39.99 KIT
47-50 SS	COU-47-65003-SS85	129.99 KIT
51-53 CAD	COU-51-65003-C85	39.99 KIT
51-53 SS	COU-51-65003-SS85	119.99 KIT
54-55 1st CAD	COU-54-65003-C89	39.99 KIT
54-55 1st SS	COU-54-65003-SS89	119.99 KIT
55-57 CAD	COU-55-65003-C89	39.99 KIT
55-57 SS	COU-55-65003-SS89	119.99 KIT
57-59 CAD	COU-57-65003-C97	39.99 KIT
57-59 SS	COU-57-65003-SS97	124.99 KIT
60-62 CAD	COU-60-65003-C97	49.99 KIT
60-62 SS	COU-60-65003-SS97	129.99 KIT
63-66 CAD	COU-63-65003-C97	49.99 KIT
63-66 SS	COU-63-65003-SS97	119.99 KIT
67-72 CAD	COU-67-65003-C97	49.99 KIT
67-72 SS	COU-67-65003-SS97	119.99 KIT



CHEVY TRUCK FLEETSIDE BED BOLT KITS

Complete set of bolts, nuts, and washers for mounting the bed.

58-59 SHORT/CAD	COU-58-65003-C77F	49.99 KIT
58-59 SHORT/SS	COU-58-65003-SS77F	135.99 KIT
58-59 LONG/CAD	COU-58-65003-C97F	49.99 KIT
58-59 LONG/SS	COU-58-65003-SS97F	154.99 KIT
60-66 SHORT/CAD	COU-60-65003-C77F	39.99 KIT
60-66 SHORT/SS	COU-60-65003-SS77F	135.99 KIT
60-62 LONG/CAD	COU-60-65003-C97F	49.99 KIT
60-62 LONG/SS	COU-60-65003-SS97F	154.99 KIT
63-66 LONG/CAD	COU-63-65003-C97F	49.99 KIT
63-66 LONG/SS	COU-63-65003-SS97F	149.99 KIT
67-72 SHORT/CAD	COU-67-65003-C77F	39.99 KIT
67-72 SHORT/SS	COU-67-65003-SS77F	135.99 KIT
67-72 LONG/CAD	COU-67-65003-C97F	49.99 KIT
67-72 LONG/SS	COU-67-65003-SS97F	149.99 KIT

BED SHEET METAL

FORD TRUCK BED FRONT PANEL

Steel panel in the front of the bed. Used to tie the bed sides together.

42-50	MAK-10759	199.99 EA
50-72	OVA-53F-65040-S	119.99 EA



FORD TRUCK BED SIDE PANELS

New steel bed sides for the Ford short bed, step side trucks. Made like original or custom.

53-56 LH	OVA-53F-16500-L	295.99 EA
53-56 RH	OVA-53F-16500-R	295.99 EA

CHEVY TRUCK BED SIDES

Steel bed sides for the Short Bed Chevy trucks. These have to go by truck freight, please call for shipping prices.

47-53 LH STEPSIDE	COU-47-16500-L	339.99 EA
47-53-RH STEPSIDE	COU-47-16500-R	339.99 EA
55-59 LH STEPSIDE	COU-55-16500-L	339.99 EA
55-59 RH STEPSIDE	COU-55-16500-R	339.99 EA
60-66 LH STEPSIDE	COU-60-16500-L	339.99 EA
60-66-RH STEPSIDE	COU-60-16500-R	339.99 EA
67-72 LH STEPSIDE	COU-67-16500-L	339.99 EA
67-72 RH STEPSIDE	COU-67-16500-R	339.99 EA
68-72 LH FLEET SHORT	COU-68-16500-L	599.99 EA
68-72 RH FLEET SHORT	COU-68-16500-R	599.99 EA
68-72 LH FLEET LONG	COU-68-16500-LBL	659.99 EA
68-72 RH FLEET LONG	COU-68-16500-LBR	659.99 EA



CHEVY TRUCK BED PATCH PANELS

Different patches for the 60-66 Fleetside SHORT Bed.

LH TAILLIGHT	COU-60-16511-L	85.00 EA
RH TAILLIGHT	COU-60-16511-R	85.00 EA
LH FRONT LOWER	COU-60-16503-L	67.99 EA
RH FRONT LOWER	COU-60-16503-R	67.99 EA
LH ABOVE WHEEL	COU-60-16510-L	69.99 EA
RH ABOVE WHEEL	COU-60-16510-R	69.99 EA
LH REAR LOWER	COU-60-16505-L	69.99 EA
RH REAR LOWER	COU-60-16505-R	69.99 EA

CHEVY TRUCK FRONT BED STEPS

Steel step plates at the front corners of the stepside bed.

55-66 LH SHORTBED	COU-55-15000-LSB	114.99 EA
55-66 RH SHORTBED	COU-55-15000-RSB	114.99 EA
55-66 LH LONGBED	COU-55-15000-L	139.99 EA
55-66 RH LONGBED	COU-55-15000-R	139.99 EA
67-72 LH SHORTBED	COU-67-15000-LSB	84.99 EA
67-72 RH SHORTBED	COU-67-15000-RSB	84.99 EA