

Your One Stop Parts Headquarters!

Quality Parts • Friendly, Knowledgeable Staff

Ph. 602-275-7990 • www.so-cal-az.com • Toll Free 800-732-0076

CHEVY TRUCK FOOT WELL PATCH PANELS

Steel patch for the foot well area in the truck.

60-66 LH	COU-60-46062-L	29.99 EA
60-66 RH	COU-60-46062-R	29.99 EA
67-72 LH	COU-67-46062-L	19.99 EA
67-72 RH	COU-67-46062-R	19.99 EA

CHEVY TRUCK TRANSMISSION FLOOR COVER

Steel plate that covers the hole in the floor above the transmission.

47-55 3 SPEED	COU-47-10000-3	69.99 EA
47-55 4 SPEED	COU-47-10000-4	69.99 EA
55-59	COU-55-10000	82.99 EA

PATCH PANELS, WHEEL WELLS

CHEVY TRUCK REAR INNER WHEEL WELLS

New steel inner wheel wells for the bed of your truck.

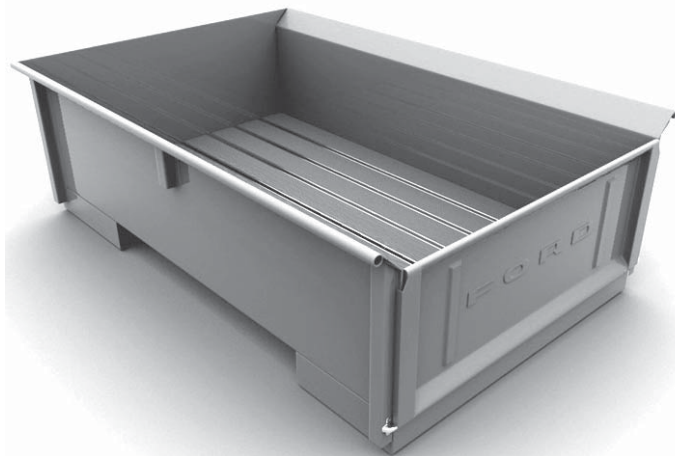
60-66 RH OR LH	COU-60-16011-L/R	99.99 EA
67-72 RH OR LH	COU-67-16011-L/R	79.99 EA

BED KITS

FORD TRUCK COMPLETE NEW TRUCK BED

This kit comes complete with all bed parts except for the rear fenders. Includes Bed sides, front panel, tailgate, wood floor, bed strips and bolts, and all hardware. Kit are available assembled or in kit form.

48-50 KIT	MAK-11127/0	PLEASE CALL
48-50 ASSEM	MAK-11167/0	PLEASE CALL
51-52 KIT	MAK-11129/0	PLEASE CALL
51-52 ASSEM	MAK-11169/0	PLEASE CALL
53-72 KIT	MAK-11131/0	PLEASE CALL
53-72 ASSEM	MAK-11171/0	PLEASE CALL



BED MOUNTING PARTS

FORD TRUCK BED TO FRAME PADS

Rubber pads that mount under the bed to the frame.

48-52	DEN-7C-8144155-S	7.99 SET
53-56	DEN-BAAA-8144155-S	7.99 SET

FORD TRUCK FRONT BED BOLTS

The two long bolts at the front of the bed that mount it to the frame.

48-63	DEN-350620-S8	3.60 EA
-------	---------------	---------

FORD TRUCK BED BOLT KIT

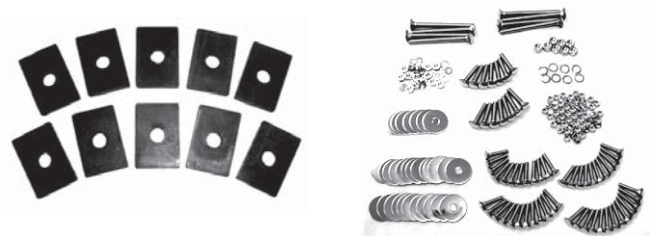
Bolts and washers that pass through the wood that mount the be to the frame. Set of 4 bolts, dished washers, and nuts.

48-72 STEPSIDE	OVA-48F-65004	21.99 SET
----------------	---------------	-----------

CHEVY TRUCK BED MOUNTING PAD SETS

Rubber that cushion the bed against the frame of the truck. 1/2 ton

47-53 SHORT	COU-47-65005-A	7.95 SET
47-53 LONG	COU-47-65005-B	10.95 SET
55-72 LONG	COU-55-65005	12.95 SET



CHEVY TRUCK BED BOLT WASHER

Cadium washer for the bolts that mount the bed to the frame.

67-72	COU-WASHER-1	1.75 EA
-------	--------------	---------

BED FLOOR PARTS

FORD TRUCK BED WOOD KIT

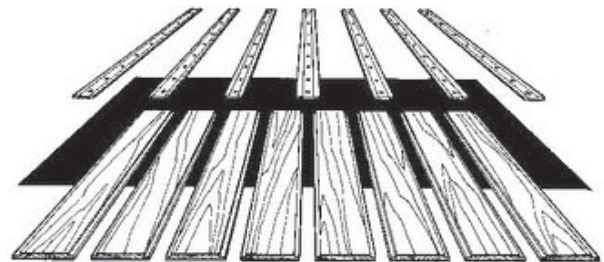
New solid oak bed wood for finishing your restoration job. Set of eight planks. STEP SIDE

50-72	EAR-1C-8312606	379.99 KIT
-------	----------------	------------

FORD TRUCK BED STRIPS 48-56 TRUCKS

Steel strips that run the length of the bed. Used to mount the wood to the floor. Set of seven strips.

PLAIN	DEN-7C-8112605-CR	99.99 SET
POLISHED SS	EAR-7C-8312605-HSS	189.99 SET



FORD TRUCK BED STRIP BOLT KITS

Complete set of bolts, nuts, and washers to attach bed strips. Plain stainless steel and polished stainless kits. Available in 49 or 65 piece bolt sets. 49 Pc set holds only the wood. 65 Pc set holds the wood and strips and also the sides, front and back of the bed.

48-56 49 PC SS	VIN-7C-8112610-SS	59.99 KIT
48-56 65 PC POLISHED	VIN-7C-8112615-SSP	89.99 KIT

FORD TRUCK BED BOARD END CAP

Stainless steel plate that mounts at the end of the bed. Used to cover the back edge of the boards.

48-72 POLISHED	EAR-7C-8312609-SS	39.99 EA
----------------	-------------------	----------

FORD TRUCK WOOD TO BED SEAL

Seal placed between the wood and the bed sides to keep the metal from scaring the wood.

48-56	DEN-7C-8144150-S	17.99 EA
-------	------------------	----------

CHEVY TRUCK ANGLE STRIPS (POLISHED STAINLESS)

Polished stainless strips that run the sides of the bed. They cover the edge of the wood along the bed side. Steel Avail, Please Call

47-53 1/2 TON	COU-47-65002-SBSS	69.99 PR
47-53 3/4 TON	COU-47-65002-LBSS	75.99 PR

Continued...



SO-CAL Speed Shop Arizona

Vintage Ford & Chevrolet Parts

54-59 1/2 TON	COU-54-65002-SBSS	69.99 PR
60-66 1/2 TON STEPSIDE	COU-60-65002-SBSS	69.99 PR
MORE YEARS AVAILABLE	CALL 800-732-0076	

CHEVY TRUCK BED STRIPS (POLISHED STAINLESS)

Polished strips that hold the wood in place. (Steel Avail. Please Call)

47-50 1/2 TON	COU-47-65001-SBSS	169.99 SET
51-53 1/2 TON	COU-51-65001-SBSS	149.99 SET
54-59 1/2 TON	COU-54-65001-SBSS	149.99 SET
58-59 FLEETSIDE	COU-58-65001-SBFSS	229.99 SET
MORE YEARS AVAILABLE	CALL 800-732-0076	

CHEVY TRUCK STEPSIDE SHORT BED BOLT KITS

Complete set of bolts, nuts, and washers for mounting the bed.

47-50 CAD	COU-47-65003-C76	39.99 KIT
47-50 SS	COU-47-65003-SS76	119.99 KIT
51-53 CAD	COU-51-65003-C76	39.99 KIT
51-53 SS	COU-51-65003-SS76	109.99 KIT
54-55 1st CAD	COU-54-65003-C77	39.99 KIT
54-55 1st SS	COU-54-65003-SS77	109.99 KIT
55-59 CAD	COU-55-65003-C77	39.99 KIT
55-59 SS	COU-55-65003-SS77	109.99 KIT
60-66 CAD	COU-60-65003-C77	39.99 KIT
60-66 SS	COU-60-65003-SS77	109.99 KIT

CHEVY TRUCK STEPSIDE LONG BED BOLT KITS

Complete set of bolts, nuts, and washers for mounting the bed.

47-50 CAD	COU-47-65003-C85	39.99 KIT
47-50 SS	COU-47-65003-SS85	129.99 KIT
51-53 CAD	COU-51-65003-C85	39.99 KIT
51-53 SS	COU-51-65003-SS85	119.99 KIT
54-55 1st CAD	COU-54-65003-C89	39.99 KIT
54-55 1st SS	COU-54-65003-SS89	119.99 KIT
55-57 CAD	COU-55-65003-C89	39.99 KIT
55-57 SS	COU-55-65003-SS89	119.99 KIT
57-59 CAD	COU-57-65003-C97	39.99 KIT
57-59 SS	COU-57-65003-SS97	124.99 KIT
60-62 CAD	COU-60-65003-C97	49.99 KIT
60-62 SS	COU-60-65003-SS97	129.99 KIT
63-66 CAD	COU-63-65003-C97	49.99 KIT
63-66 SS	COU-63-65003-SS97	119.99 KIT
67-72 CAD	COU-67-65003-C97	49.99 KIT
67-72 SS	COU-67-65003-SS97	119.99 KIT



CHEVY TRUCK FLEETSIDE BED BOLT KITS

Complete set of bolts, nuts, and washers for mounting the bed.

58-59 SHORT/CAD	COU-58-65003-C77F	49.99 KIT
58-59 SHORT/SS	COU-58-65003-SS77F	135.99 KIT
58-59 LONG/CAD	COU-58-65003-C97F	49.99 KIT
58-59 LONG/SS	COU-58-65003-SS97F	154.99 KIT
60-66 SHORT/CAD	COU-60-65003-C77F	39.99 KIT
60-66 SHORT/SS	COU-60-65003-SS77F	135.99 KIT
60-62 LONG/CAD	COU-60-65003-C97F	49.99 KIT
60-62 LONG/SS	COU-60-65003-SS97F	154.99 KIT
63-66 LONG/CAD	COU-63-65003-C97F	49.99 KIT
63-66 LONG/SS	COU-63-65003-SS97F	149.99 KIT
67-72 SHORT/CAD	COU-67-65003-C77F	39.99 KIT
67-72 SHORT/SS	COU-67-65003-SS77F	135.99 KIT
67-72 LONG/CAD	COU-67-65003-C97F	49.99 KIT
67-72 LONG/SS	COU-67-65003-SS97F	149.99 KIT

BED SHEET METAL

FORD TRUCK BED FRONT PANEL

Steel panel in the front of the bed. Used to tie the bed sides together.

42-50	MAK-10759	199.99 EA
50-72	OVA-53F-65040-S	119.99 EA



FORD TRUCK BED SIDE PANELS

New steel bed sides for the Ford short bed, step side trucks. Made like original or custom.

53-56 LH	OVA-53F-16500-L	295.99 EA
53-56 RH	OVA-53F-16500-R	295.99 EA

CHEVY TRUCK BED SIDES

Steel bed sides for the Short Bed Chevy trucks. These have to go by truck freight, please call for shipping prices.

47-53 LH STEPSIDE	COU-47-16500-L	339.99 EA
47-53-RH STEPSIDE	COU-47-16500-R	339.99 EA
55-59 LH STEPSIDE	COU-55-16500-L	339.99 EA
55-59 RH STEPSIDE	COU-55-16500-R	339.99 EA
60-66 LH STEPSIDE	COU-60-16500-L	339.99 EA
60-66-RH STEPSIDE	COU-60-16500-R	339.99 EA
67-72 LH STEPSIDE	COU-67-16500-L	339.99 EA
67-72 RH STEPSIDE	COU-67-16500-R	339.99 EA
68-72 LH FLEET SHORT	COU-68-16500-L	599.99 EA
68-72 RH FLEET SHORT	COU-68-16500-R	599.99 EA
68-72 LH FLEET LONG	COU-68-16500-LBL	659.99 EA
68-72 RH FLEET LONG	COU-68-16500-LBR	659.99 EA



CHEVY TRUCK BED PATCH PANELS

Different patches for the 60-66 Fleetside SHORT Bed.

LH TAILLIGHT	COU-60-16511-L	85.00 EA
RH TAILLIGHT	COU-60-16511-R	85.00 EA
LH FRONT LOWER	COU-60-16503-L	67.99 EA
RH FRONT LOWER	COU-60-16503-R	67.99 EA
LH ABOVE WHEEL	COU-60-16510-L	69.99 EA
RH ABOVE WHEEL	COU-60-16510-R	69.99 EA
LH REAR LOWER	COU-60-16505-L	69.99 EA
RH REAR LOWER	COU-60-16505-R	69.99 EA

CHEVY TRUCK FRONT BED STEPS

Steel step plates at the front corners of the stepside bed.

55-66 LH SHORTBED	COU-55-15000-LSB	114.99 EA
55-66 RH SHORTBED	COU-55-15000-RSB	114.99 EA
55-66 LH LONGBED	COU-55-15000-L	139.99 EA
55-66 RH LONGBED	COU-55-15000-R	139.99 EA
67-72 LH SHORTBED	COU-67-15000-LSB	84.99 EA
67-72 RH SHORTBED	COU-67-15000-RSB	84.99 EA

Your One Stop Parts Headquarters!

Quality Parts • Friendly, Knowledgeable Staff

Ph. 602-275-7990 • www.so-cal-az.com • Toll Free 800-732-0076

CHEVY TRUCK STAKE POCKETS

New steel stake pockets for your bed sides.

47-53 FRONT	MAK-40483	39.99 EA
47-53 LH REAR	MAK-40483-LR	39.99 EA
47-53 RH REAR	MAK-40483-RR	39.99 EA

CHEVY TRUCK BED FRONT PANEL

Wall at the front of the bed. Just like original. Fits Chevy and G.M.C.

47-53 STEPSIDE	COU-47-65040	119.99 EA
54-59 STEPSIDE	COU-54-65040	109.99 EA
58-59 FLEETSIDE	COU-58-65040-F	139.99 EA
60-66 FLEETSIDE	COU-60-65040-F	159.99 EA
60-72 STEPSIDE	COU-60-65040-S	120.00 EA
67-72 FLEET W/STEEL FLR	COU-67-65040-FS	169.99 EA
67-72 FLEET W/WOOD FLR	COU-67-65040-FW	169.99 EA



CHEVY TRUCK FRONT PANEL BOLT KIT

Bolt kit that mounts the front panel to the bed.

54-87 STEPSIDE ZINC	COU-54-65041-SKZ	9.99 KIT
57-87 STEPSIDE SS	COU-54-65041-SKSS	19.99 KIT
67-72 FLEET ZINC	COU-67-65041-SKZ	10.00 KIT
67-72 FLEET SS	COU-67-65041-SKSS	25.00 KIT

BED CROSSMEMBERS

FORD TRUCK REAR BED CROSSMEMBER

Crossmember that fits under the back of the bed under the tailgate.

42-50	MAK-20339	69.99 EA
51-72	EAR-BAAA-830108-A	89.99 EA

FORD TRUCK SMALL CROSSMEMBERS

These are the center and front crossmembers under the bed that mount to the frame. These are for the StepSide bed.

51-52 FRONT	OVA-51F-65025	41.99 EA
53-56 FRONT	OVA-53F-65025	41.99 EA
51-60 CENTER	OVA-51F-65030	45.99 EA

CHEVY TRUCK REAR CROSSMEMBER

Steel crossmember for the rear of the bed.

47-50	COU-47-65035	89.99 EA
51-53	COU-51-65035	89.99 EA
54-55	COU-54-65035	109.99 EA
55-59 STEPSIDE	COU-55-65035-STEP	109.99 EA
63-66 STEPSIDE	COU-63-65035-STEP	99.99 EA
63-66 FLEETSIDE	COU-63-65035-F	149.99 EA
67-72 STEPSIDE	COU-67-65035-STEP	99.99 EA

CHEVY TRUCK SMALL CROSSMEMBERS

Steel crossmembers that run side to side in the bed frame.

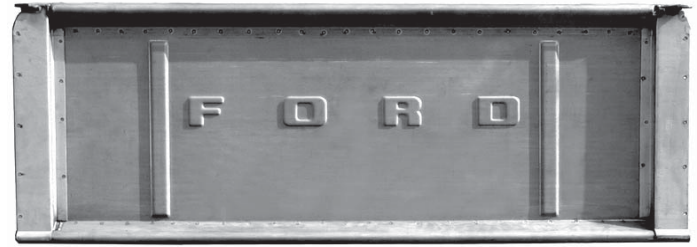
47-50 FRONT	COU-47-65025	29.99 EA
47-50 CENTER	COU-47-65030	29.99 EA
51-53 FRONT	COU-51-65025	29.99 EA
51-53 CENTER	COU-51-65030	29.99 EA
54-72 STEPSIDE	COU-54-65030-STEP	22.99 EA
67-72 FLEET STEEL BED	COU-67-65030-S	39.99 EA
63-72 FLEET WOOD BED	COU-63-65030-F	29.99 EA

TAIL GATES

FORD TRUCK TAILGATE

New tailgates for the Ford Trucks. Watch for fleet-side or step-side.

42-50 STEP	MAK-10142	350.00 EA
50-52 STEP	MAK-10143	350.00 EA
53-72 STEP	DEN-B7C-8340700-A	437.99 EA
53-72 STEP "SMOOTH"	OVA-53F-65050	259.99 EA
61-63 UNIBODY	DEN-C1TZ-6640702-C	479.99 EA
64-72 FLEET	DEN-C7TZ-9940700-A	469.99 EA



CHEVY TRUCK FLEETSIDE TAILGATE

Reproduction tailgate for the fleetside truck.

58-66 NO LETTERING	COU-58-65050	419.99 EA
58-66 "CHEVROLET"	COU-58-65050-C	439.99 EA
58-66 "GMC"	COU-58-65050-GMC	469.99 EA
67-72 NO LETTERING	COU-67-65050	249.99 EA
67-72 "CHEVROLET"	COU-67-65050-C	389.99 EA
67-72 "GMC"	COU-67-65050-GMC	399.99 EA
73-80 TAILGATES		PLEASE CALL



CHEVY TRUCK STEPSIDE TAILGATES

New reproduction tailgates for the Chevy trucks.

47-53 NO LETTERING	COU-47-65050	169.99 EA
47-53 "CHEVROLET"	COU-47-65050-C	210.00 EA
47-53 "GMC"	COU-47-65050-GMC	319.99 EA
54-72 NO LETTERING	COU-54-65050	189.99 EA
54-72 "CHEVROLET"	COU-54-65050-C	279.99 EA
54-72 "GMC"	COU-54-65050-GMC	339.99 EA

TAIL GATE PARTS

FORD TRUCK TAILGATE HINGES (Pictured next page)

Hinges that mount to the bed of the truck that the tailgate pivots on. 2 required

48-72 SS STEP	DAL-81C-65011-SS	15.00 EA
64-72 FLEET	DEN-C4TZ-9943000-A	29.99 EA

FORD TRUCK TAILGATE BUMPERS

Rubber bumpers that keep the tailgate from rattling against the bed.

53-72	DEN-BAAA-8340725-A	5.99 PR
-------	--------------------	---------



est. 1946

SO-CAL Speed Shop Arizona Vintage Ford & Chevrolet Parts

FORD TRUCK UPPER TAILGATE BUMPERS

Bumpers that cushion the gate as it is closed.

67-72 DEN-C4TZ-9940224 5.00 PR



UNIVERSAL HIDDEN TAILGATE LATCH

Mounts in the top roll of the tailgate and latches in the side of the bed at the stake pockets. Nice small hidden latches.

48-72 STEPSIDE CLA-CPSLK-S 72.99 PR

UNIVERSAL TAILGATE LATCHES

These chrome latches mount on the inside to allow removal of chains and hooks from the tailgate for that smooth look. These mount inside to the bed side and use a hook-catch style latch.

UNIVERSAL EAR-7C-8344457-C 31.99 KIT



FORD TRUCK TAILGATE HANDLE

Chrome handle for opening the tailgate.

64-72 DEN-C7TZ-99431B82-A 38.99 EA

FORD TRUCK TAILGATE HANDLE BACKING PLATE

Stainless steel plate that mounts behind the tailgate handle.

64-72 DEN-C4TZ-99431C78-SS 49.99 EA

CHEVY TRUCK TAILGATE HINGES

Steel brackets that mount to the bed that the tailgate connects onto.

47-53 COU-47-65000 20.99 PR



CHEVY TRUCK TAILGATE HINGES/SUPPORTS

Arms that support the tailgate when its open. Fleetside

67-72 COU-67-65051 36.99 PR

CHEVY TRUCK TAILGATE LATCHES

Latches in the tailgate that keep it closed when its up. Fleetside

67-72 COU-67-65052 34.99 PR

CHEVY TRUCK TAILGATE HANDLE

Handle on the out side of the tailgate thats used for opening it. Fleetside

67-72 COU-67-65053 22.99 EA

CHEVY TRUCK TAILGATE RODS

Rods in the tailgate that connect the handle to the latches. Fleetside

67-72 COU-67-65054 15.99 SET

CHEVY TRUCK TAILGATE TRUNIONS

Steel rollers on the bed that the tailgate pivots on.

54-87 STEPSIDE COU-54-65007 10.00 PR

58-66 FLEETSIDE COU-58-65007-F 20.00 PR

67-72 FLEETSIDE COU-67-65007-F 20.00 PR



CHEVY TRUCK TAILGATE LATCH PIVOT BOLT

Pivot bolt for the tailgate latch on fleetside trucks.

58-66 COU-58-65008 6.50 EA

TAIL GATE CHAINS & PARTS

FORD TRUCK TAILGATE CHAINS

Chains that hold the tailgate to the bed.

48-50 DEN-21C-8344456-PR 115.99 PR

51-52 DEN-1C-8344456-PR 119.99 PR

53-72 DEN-BAAA-8344456-A 84.99 PR

53-72 S/S DEN-BAAA-8344456-SS 139.99 PR



FORD TRUCK TAILGATE CHAIN COVERS

Rubber covers for the tailgate chain to keep from scratching the bed.

48-72 DEN-7C-8144450-S 11.99 PR

FORD TRUCK TAILGATE CHAIN BUMPER

Rubber bumpers to keep the chains from bumping against the bed.

53-72 DEN-BAAA-8344458-S 5.99 PR

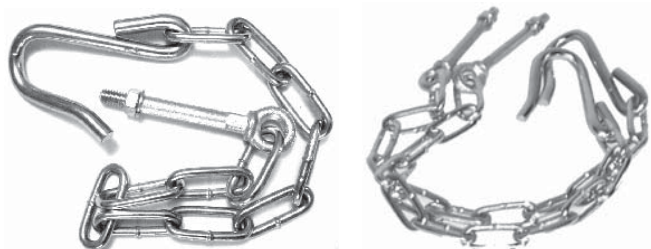
CHEVY TRUCK TAILGATE CHAINS

Chains and brackets for holding the tailgate in place. Includes hardware.

47-53 COU-47-65006 26.99 SET

54-87 STEPSIDE COU-54-65006 26.99 SET

58-66 FLEETSIDE COU-58-65006 35.00 SET



CHEVY TRUCK TAILGATE CHAIN COVERS

Rubber covers that keep the chains from scratching the bed or tailgate.

47-87 BLACK COU-47-65009-B 8.00 PR

47-87 CLEAR COU-47-65009-C 8.00 PR